

STANDARD ARRIVAL CHART
INSTRUMENT (STAR) - ICAO

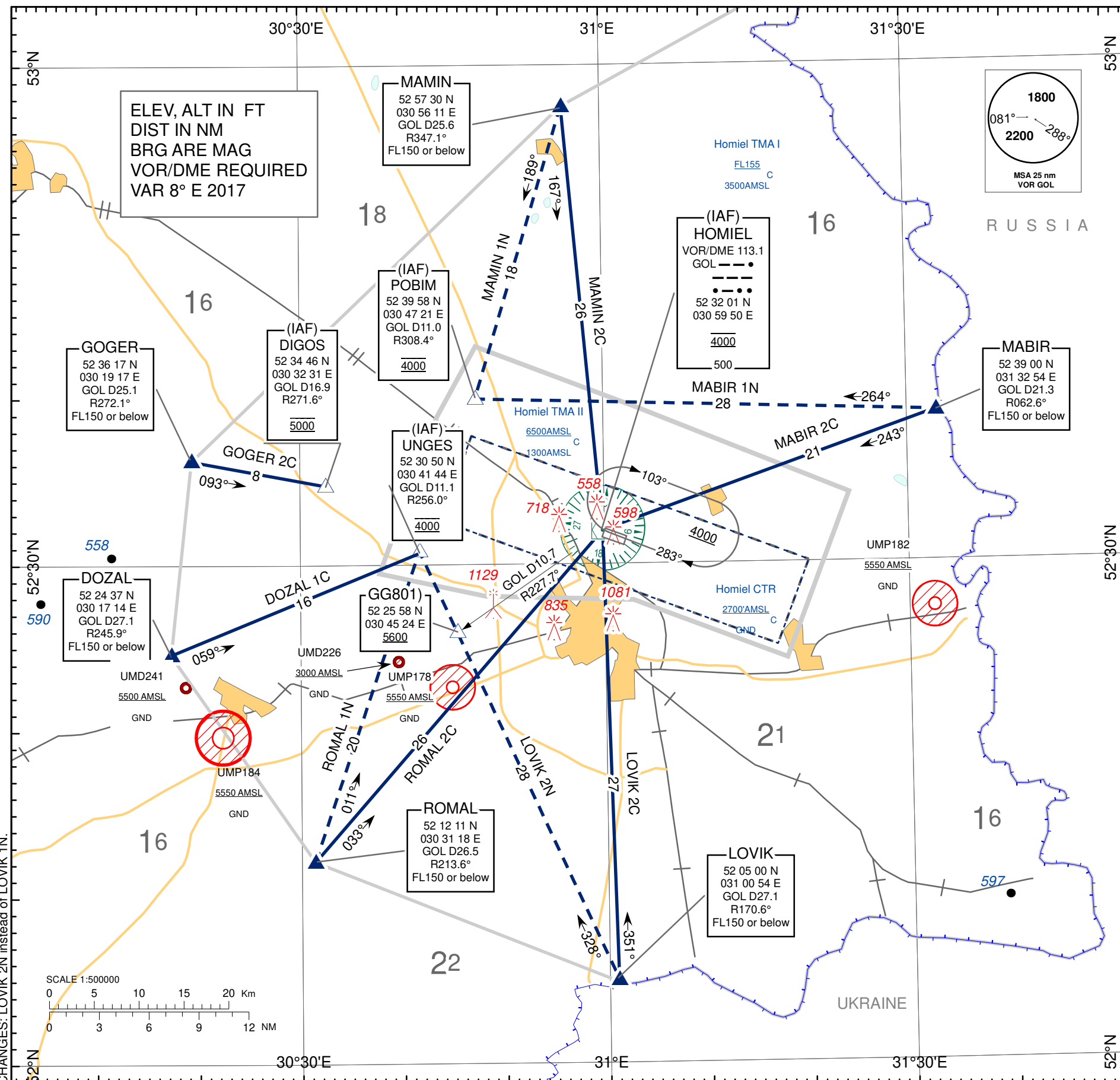
TRANSITION LEVEL: by ATC
TRANSITION ALTITUDE: 6000

Alt set: - hPa (mm on req)
- QNH (QFE on req)

APP 126.100
TWR 118.100
MET 119.550 (EN)
124.475 (RUS)

HOMIEL
RWY 10

DOZAL 1C, GOGER 2C, LOVIK 2C
LOVIK 2N, MABIR 2C, MABIR 1N
MAMIN 2C, MAMIN 1N, ROMAL 2C
ROMAL 1N



CHANGES: LOVIK 2N instead of LOVIK 1N.

BELAERONAVIGATSIA SOE

STANDARD ARRIVAL CHART INSTRUMENT (STAR) ROUTES
HOMIEL RWY 10

STAR NAME	ROUTE
DOZAL 1C	DOZAL ONE CHARLIE After passing DOZAL proceed on 059° track to UNGES (IAF). Cross UNGES (IAF) at 4000 AMSL.
GOGER 2C	GOGER TWO CHARLIE After passing GOGER proceed on 093° track to DIGOS (IAF). Cross DIGOS (IAF) at 5000 AMSL.
LOVIK 2C	LOVIK TWO CHARLIE After passing LOVIK intercept GOL VOR R-171° inbound to GOL (IAF). Cross GOL (IAF) at 4000 AMSL.
LOVIK 2N	LOVIK TWO NOVEMBER After passing LOVIK proceed on 328° track to UNGES (IAF) (cross GG801 at 5600 or above). Cross UNGES (IAF) at 4000 AMSL.
MABIR 2C	MABIR TWO CHARLIE After passing MABIR intercept GOL VOR R-063° inbound to GOL (IAF). Cross GOL (IAF) at 4000 AMSL.
MABIR 1N	MABIR ONE NOVEMBER After passing MABIR proceed on 264° track to POBIM (IAF). Cross POBIM (IAF) at 4000 AMSL.
MAMIN 2C	MAMIN TWO CHARLIE After passing MAMIN intercept GOL VOR R-347° inbound to GOL (IAF). Cross GOL (IAF) at 4000 AMSL.
MAMIN 1N	MAMIN ONE NOVEMBER After passing MAMIN proceed on 189° track to POBIM (IAF). Cross POBIM (IAF) at 4000 AMSL.
ROMAL 2C	ROMAL TWO CHARLIE After passing ROMAL intercept GOL VOR R-214° inbound to GOL (IAF). Cross GOL (IAF) at 4000 AMSL.
ROMAL 1N	ROMAL ONE NOVEMBER After passing ROMAL proceed on 011° track to UNGES (IAF). Cross UNGES (IAF) at 4000 AMSL.

THIS PAGE INTENTIONALLY LEFT BLANK